



Light Station & App User Manual For New App

Geachte klant,

Wij wensen u veel plezier met uw nieuwe aankoop.

Stiplight is continu bezig met het verbeteren van zijn producten. Daarom is er onlangs een nieuwe app ontwikkeld voor Apple en Android gebruikers. Daarom zijn er ook 2 handleidingen meegeleverd.

De eerste is voor de Apple gebruikers die direct van start kunnen met het gebruik app om de lampen te besturen. De android gebruikers moeten helaas nog even wachten, natuurlijk kan er al gebruik worden gemaakt van de lampen met de afstandsbediening.

De tweede handleiding is voor de nieuwe app voor zowel Apple als Android gebruikers.

Deze zal tussen half augustus en begin september online staan onder de naam kit4home.

Deze app biedt meer mogelijkheden dan ooit tevoren, zoals het op afstanden besturen van lampen als je even niet thuis bent. Het is dus zeker de moeite waard even te wachten.

Wij zijn er zeker van dat u deze extra features zal waarderen.

In de nabije toekomst zal het systeem ook worden uitgebreid met LED strips en spot lights, hiervan houden wij u uiteraard op de hoogte!

Wij bedanken u alvast voor het geduld en dan wensen wij u alvast veel plezier met uw persoonlijk verlichtingssysteem.

Met vriendelijke groet,

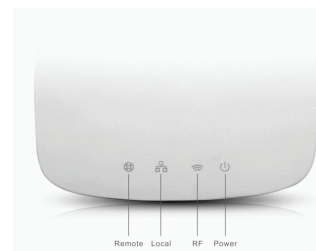
www.stiplight.com

Light Station & App User Manual

1.) Installing the Light Station & App

How to install the Light Station and start using your light bulbs.

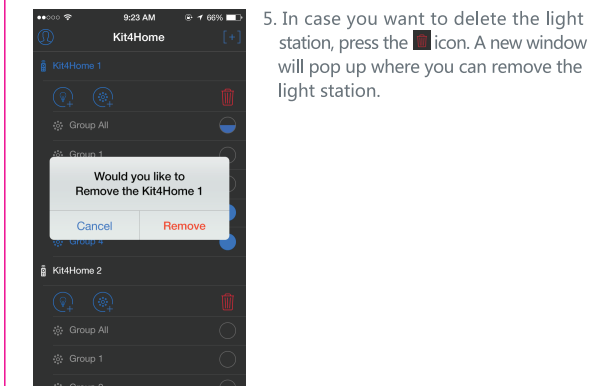
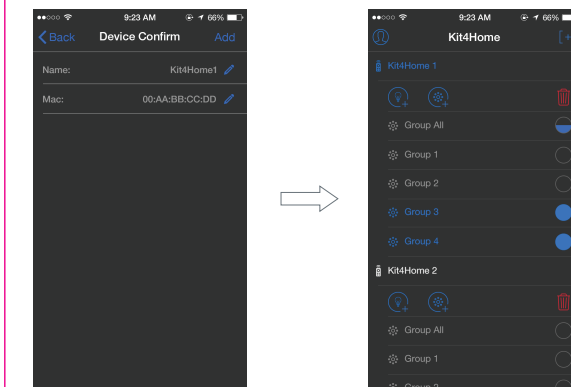
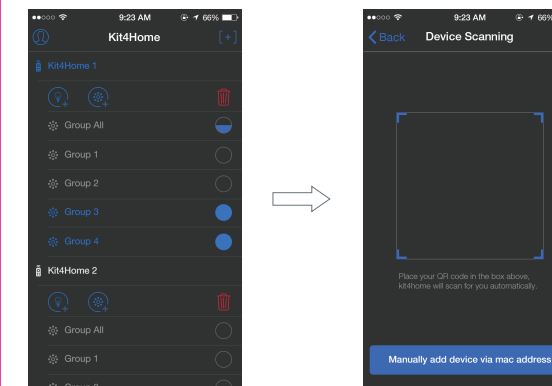
1. Search for the App "Kit4home" from the Apple store or Google play, download it for free and install it. Or simply scan the QR-Code on the box.
2. Connect your iPhone, iPad or iPod with IOS 5.1 or your smartphone with Android 3.6 or above to your home network.
3. Connect the Light Station to electricity via the power cable (DC 5V). Once connected, the power light will turn red. Furthermore, connect the light station to your router with the network cable.



Local Mode

1. Open the "kit4home" App.
2. Press the sign which is located on the top-right corner. It will automatically pop up a window.
3. In the window, you can scan QR-Codes. Use it to scan the QR-Code that is located on the bottom of the light station. Once finished scanning, a new interface will pop up. Another option is to manually add a MAC address.
4. In this interface, enter a device name next (such as living room or bedroom) and press "Add".

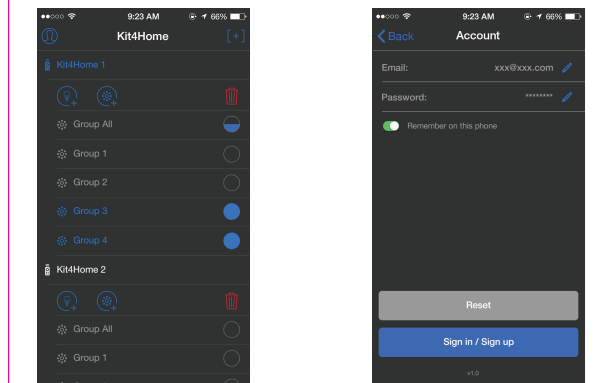
Note: do not change the information that is displayed next to "MAC". The light station is connected once the name turns blue. (Please see example "Kit4home 1" on the picture below). If the name and antenna stays gray, no connection is made. (See example "Kit4home2" in the picture below). In this case, reset the light station and retake previous steps.



Remote Access Mode

For access via the server, control your lights wherever you are

1. Signing up an Account Press , which is located on the top-left corner of home page. Fill in any Email address as account name. As password, make sure you have at least 6 characters and press the "Sign in/Sign Up" button below. Your account has been made now and the app will go back to home screen.

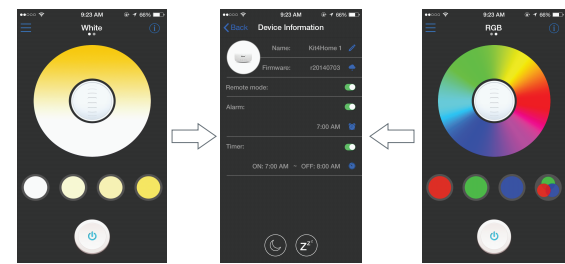


2. Bind your light station with the server.

Go to the White Light or RGB setting Mode, click on top-right corner to go to the Device Information Page, and slide the button to bind light station with server

Note: If your account has been connected with the server and light station, other accounts can not be signed in for controlling the system via remote access.

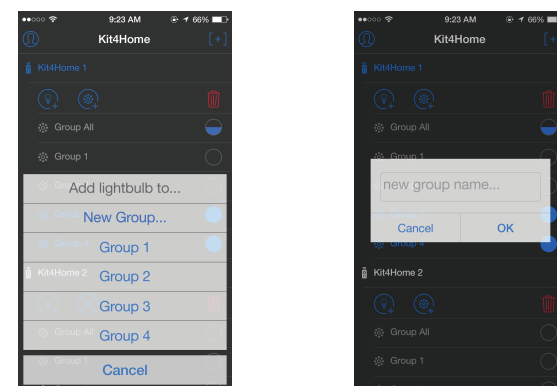
You need to slide off to unbind firstly. Now other account can make use of remote access. You can share your account details with others, then they can log in and also make use of it at the same time.



2.) Connecting lamps, setting groups and control via your smartphone

1. Adding lights and connecting to groups Choose the lamp you want to connect to your smartphone. Go to the home page of the app (picture below). Turn on the lamp. Within 3 seconds you need to click the button on to add the lamp. Now, a new window will pop up. In this window, you can enlist the light to a certain group. If you press button 1, the lamp you added will blink in green light for three times. It is now connected to group number 1. You can also add it to group button 2, 3, or 4.

If you want to change groups, please turn of the lights with normal switch. Then, turn it on and tap the group button you want, the light bulb will blink three times in green light. Now the light bulb has been added to the group you want. If you want to connect more lamps, you can do this exactly in the same way.

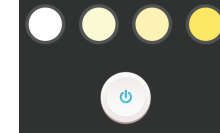


2. Adding groups You can make up to 16 groups. Click to add more groups. Fill in a group name and press "OK". Please see the right picture above.

3.) Control via your smartphone

1. White light, controlling various options in white light

- 1.) Touch to adjust the color temperature from cool white to warm white
- 2.) You can slide the center of the color temperature ring up or down. Slide down to dim the lights, or up to let them shine bright.



2. RGB light, start choosing your colors

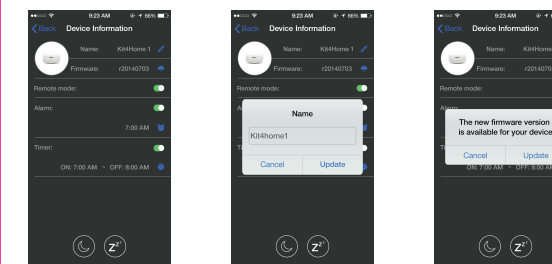
- 1.) RGB Interface, colors Slide your screen from White and you will see the RGB interface as shown above. Now you can start changing colors and brightness.



- 2.) Changing and choosing colors Touch the color ring and the color will change to the color of your choice.
- 3.) Changing Brightness You can slide the center of the color ring up or down. Slide down to dim the lights, or up to let them shine bright.

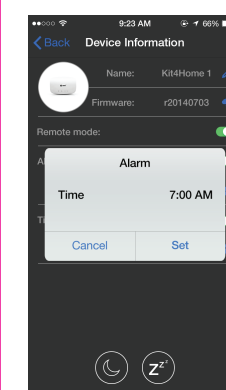
3. Wake up light, timers and Device Information

When in the White light or RGB mode, click on the top-right corner to go to the Device information interface. Here, you can revise the device name (2nd picture), update firmware (3rd picture) and also find the Alarm, Timer, Night and Sleep functions.



1.) Alarm function

Click to set the time you want to turn the lights on to wake up. The lamp will blink with green light, which confirms that the wake up time is set. The sun will rise in 10 minutes and starts at the set time. Slide to another side to cancel it.



2.) Timer Mode

Click to set the timer to turn on or off the lights. The lamp will blink once with green light. Now the timer has been set. Slide to another side to cancel it.

3.) Night Mode

Click on night mode and the softest sleeping light will appear. The color temperature will drop to 2700 Kelvin which is only 2% of its capacity. Perfect for when you are sleeping.

4.) Sleep mode

To use the sleep mode, click on the button "Sleep" . The lamp will blink once with green light and change to warm white. The lamp darkens gradually and will completely turn off after 20 minutes.

